



5500 FETTL ROAD

minnetonka | mn

OFFICE SPACE AVAILABLE FOR LEASE

PROPERTY HIGHLIGHTS



1 story building



abundance of natural light



10,916 sf available



ample surface parking



lease rate \$12.00/sf
tax + opex \$5.35/sf



private entrance

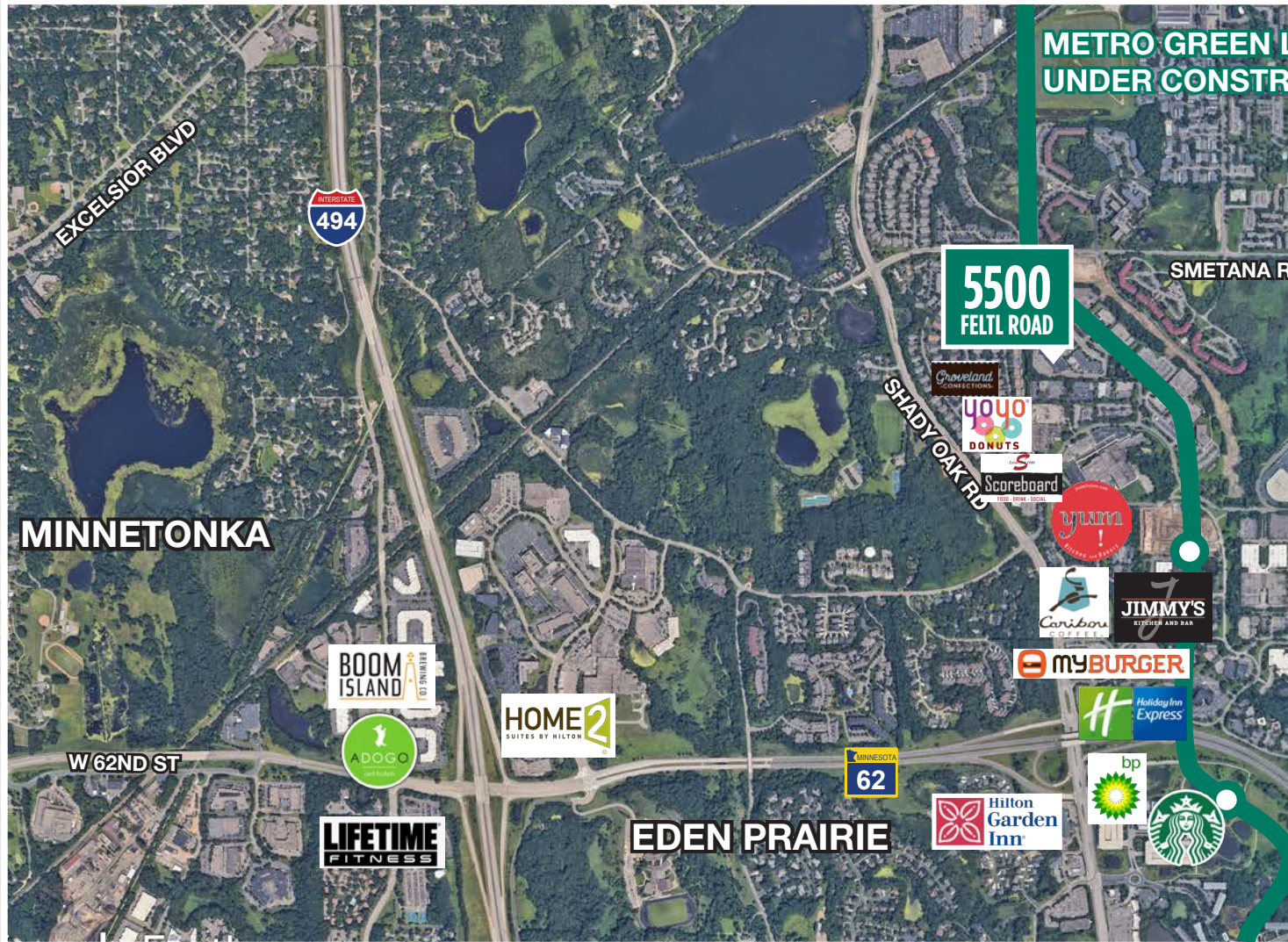


MOVE-IN READY



WORKSPACES

AREA AMENITIES



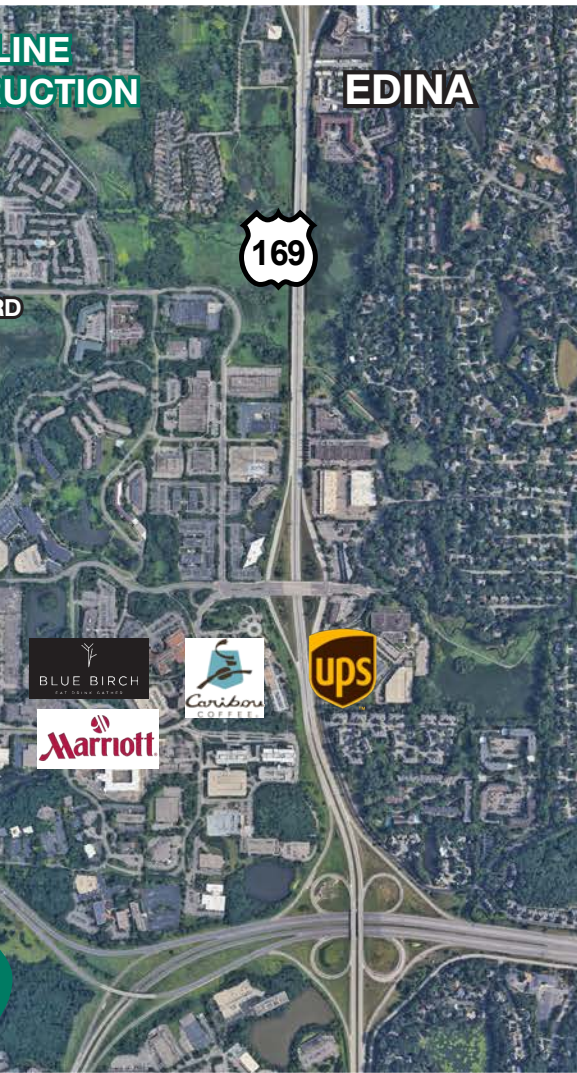
MILES OF BIKING/
WALKING/
JOGGING TRAILS



SEVEN COFFEE
SHOPS WITHIN
2 MILES



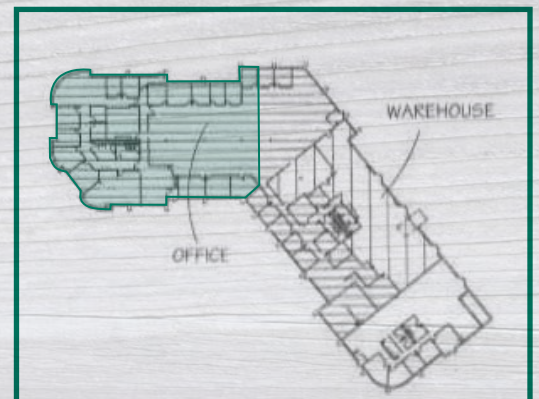
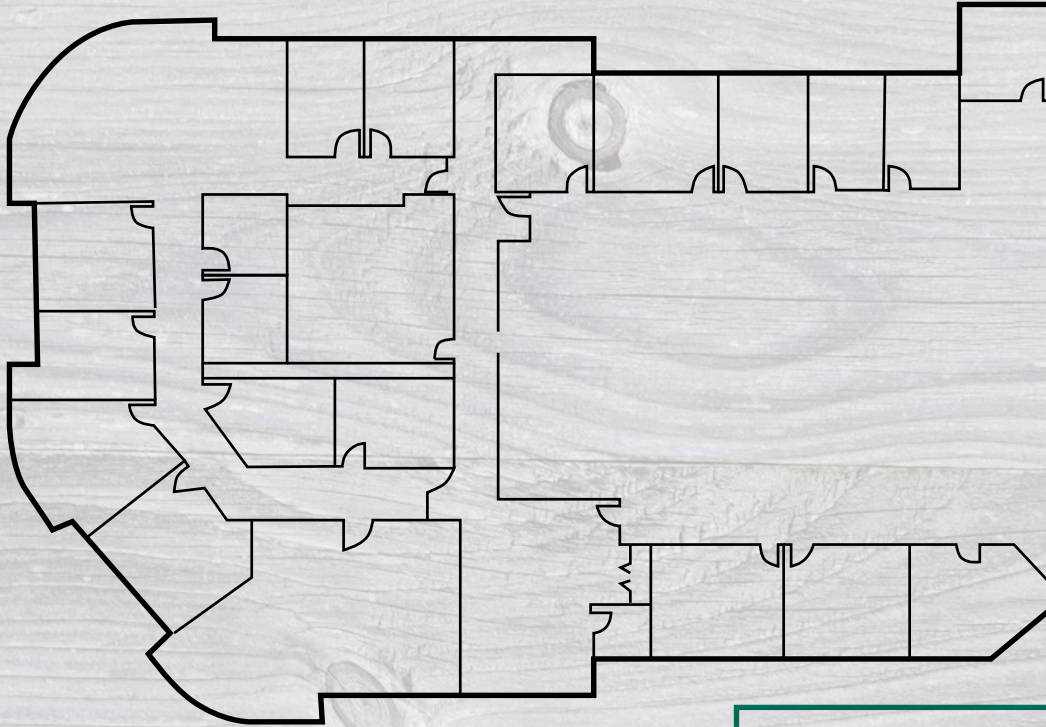
ABUNDANCE OF
NEARBY DINING
OPTIONS



EASY ACCESS TO
I-494, I-169 & THE
CROSSTOWN

FLOOR PLAN

10,916 SF Available



Key Plan





FOR MORE INFORMATION, CONTACT:

STEVE SHEPHERD SIOR
Senior Managing Director

T 612 430 9973
steve.shepherd@nmrk.com

MATT ELDER CCIM, SIOR
Managing Director

T 612 430 9974
matt.elder@nmrk.com

100 SOUTH 5TH STREET #2100, MINNEAPOLIS, MN 55402

NEWMARK

The information contained herein has been obtained from sources deemed reliable but has not been verified and no guarantee, warranty or representation, either express or implied, is made with respect to such information. Terms of sale or lease and availability are subject to change or withdrawal without notice.